

Pallet Racking - Push Back

Visit www.dexion.ro/en/Product-Categories/Pallet-Racking/Push-Back/ for the latest information.

Create functional and logical warehouse storage with the right pallet racking system.

Pallet racking can be configured in a variety of ways and systems, depending on the customer's requirements and pallet load.

Whether its frozen food in a cold store utilising either **Drive-in racking** or **mobile racking** (MOVO), or bulk goods, such as products with a "best before date", that are stored on a FIFO (first in first out) **pallet flow** system, all goods stored on pallets will be ideally stored by one of these methods as this provides optimal storage economics.

Click here for [a comparison of the different Pallet racking systems](#), make sure you get the right one for your warehouse.

Push Back - Rollers is a product in the category

Pallet Racking

- P90 Standard Wide Aisle
- Narrow Aisle Racking
- Mobile Pallet Racking
- Carton Flow
- Pull-Out Unit
- Drive-in Racking
- Pallet Shuttle System
- Push Back - Trolleys
- Push Back - Rollers**
- Pallet Flow
- Rack83
- Premierack Wide Aisle
- Pallet Racking Comparison

Please visit www.dexion.ro to see our other products.

Description

Push Back pallet racking is particularly suitable for bulk goods that can be stored on pallets according to the Last in – First out (LIFO) principle.

Special channels with wheeled conveyors or rollers sloping at approx 4degrees are integrated into one sub-frame of the P90 racking system. This system is sometimes known as dynamic pallet racking.

One after the other, up to ten pallets can be pushed into these channels and once a pallet is picked from the pick face, the rest roll forward automatically under a controlled speed. Individual pallets further back in the rack cannot be accessed directly.

Speedlock P90 Push Back racking can also be used to provide additional storage space in otherwise unusable areas such as above cross-aisles or around dock-levelers. When fully utilised, very high occupancy rates can be achieved, compared to drive-in racking or block-stacking.

Summary:

- Pallet storage on sloping wheel/roller conveyors
- Accessible by Last in – First out (LIFO) principle
- Storage and removal from one side only

Pallet Racking › Push Back - Rollers

References

[Hansa Print, Finland](#)





www.dexion.com

+44 800 581 531

- Up to 75% increase in storage capacity

Don't know how to organise your storage?
Need help and advice designing your new warehouse layout?
[Contact us for help and advice by clicking on this link.](#)

Range

Available in depths of up to 10 pallets and suitable for heights of up to 12m, the great strengths of Push Back conveyor racking are;

- Operations are reduced to a minimum
- Storage capacity increases by up to 75% (compared to conventional pallet racking stores)
- Quick and easy access to all channels
- Maximum use of floor space
- Suitable for bulk storage and cold store
- Pallets always presented at the front of racking
- Accessible by First-In – Last-Out principle



Specifications

P90 Push Back is a dynamic storage solution which is based on our P90 Pallet Racking System including wheel/roller conveyors.

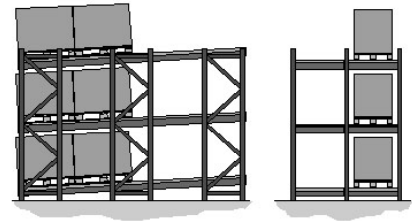
Pallets are stored on the wheeled/roller conveyors and each new pallet pushes the previously stored pallet back into the channel. Loading and unloading only takes place at the racking front so that forklift truck movements and cycle times are minimised.

Due to the sloping wheel/roller conveyors the rear pallets always arrive at the racking front after the unloading of the foremost pallet.

Standard Dimensions:

- Channel Depth: Up to 10 Pallets
- Channel Height: Up to 12000 mm

Pallet Racking › Push Back - Rollers



Accessories - Pallet Racking



Floor Mounted Column Guards

A substantial form of protection for pallet racking uprights, protects against low level impact damage caused by forklift trucks.



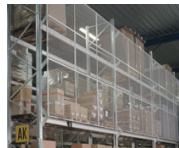
Snap on Upright Protectors

These upright protectors can absorb large impacts and is quickly attached to a pallet racking upright without the need for additional fasteners.



Rack End Protectors

A robust barrier ideal for protecting vulnerable areas from forklift damage and general low level impact.



Anti Collapse Mesh

Metal mesh product that offers protection for a variety of scenarios. More info about [Anti Collapse Mesh](#)>>



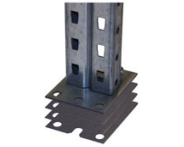
Sign & Marking system

Label holder, self-adhering or with magnetic tape for different kind of shelves and beams. More info about [Sign & Marking system](#)>>



Load and Assembly Signs

Signage for loading and assembly instructions, which can be mounted on the racks.



Levelling Plates

Leveling plates are used underneath uprights to correctly raise the height of an upright.



Locking Pins

Beam locking pins are required for safety in the connector, at each end of a beam.